



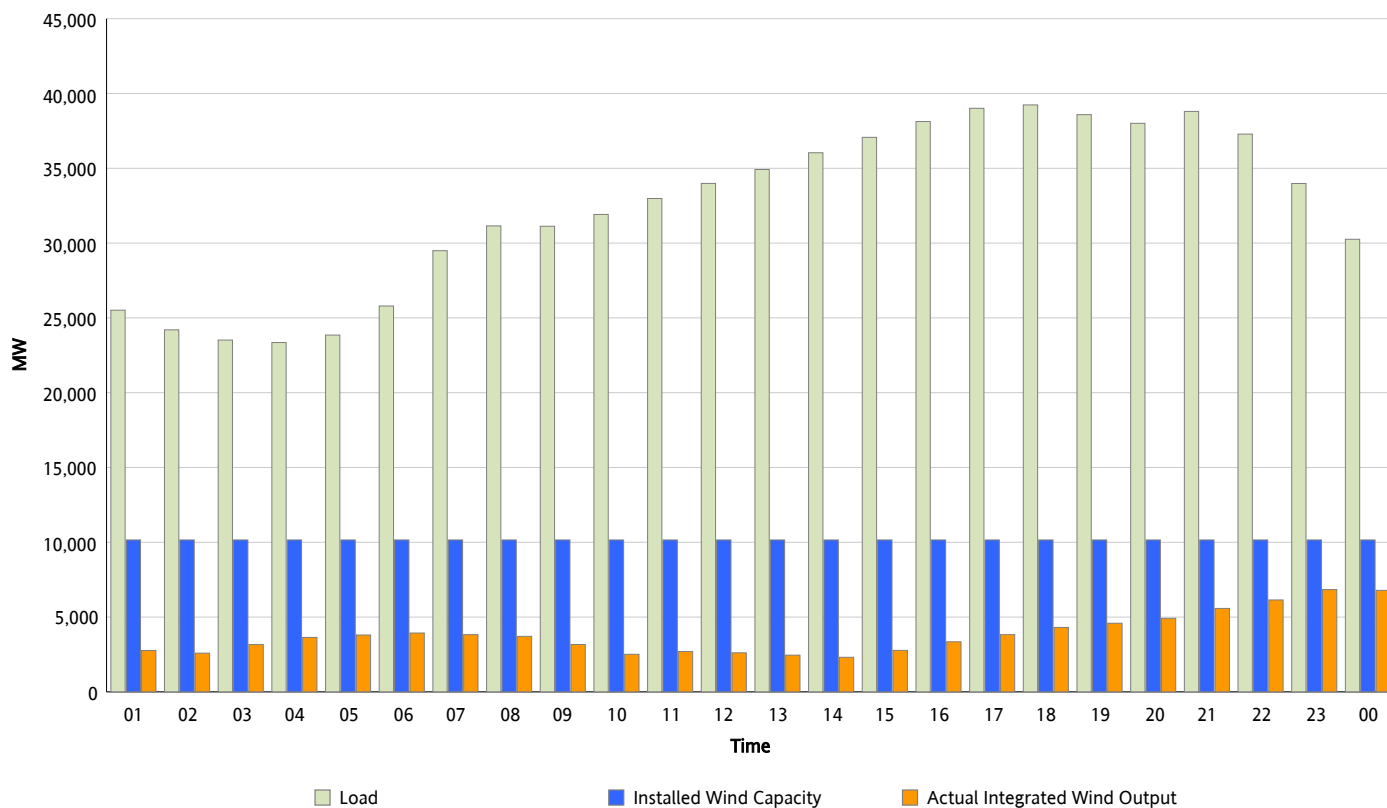
ERCOT Grid Operations

Wind Integration Report : 04/01/2013

Peak Load	39,235 MW
Load Peak Hour (HE)	18
Wind Over Peak	4,308 MW
Wind Record 02/09/13	9,481 MW
Max Wind Value*	7,303 MW
Wind Peak Time	23:02
Wind Integration %	22.9 %

Hourly Average Actual Load vs. Actual Wind Output

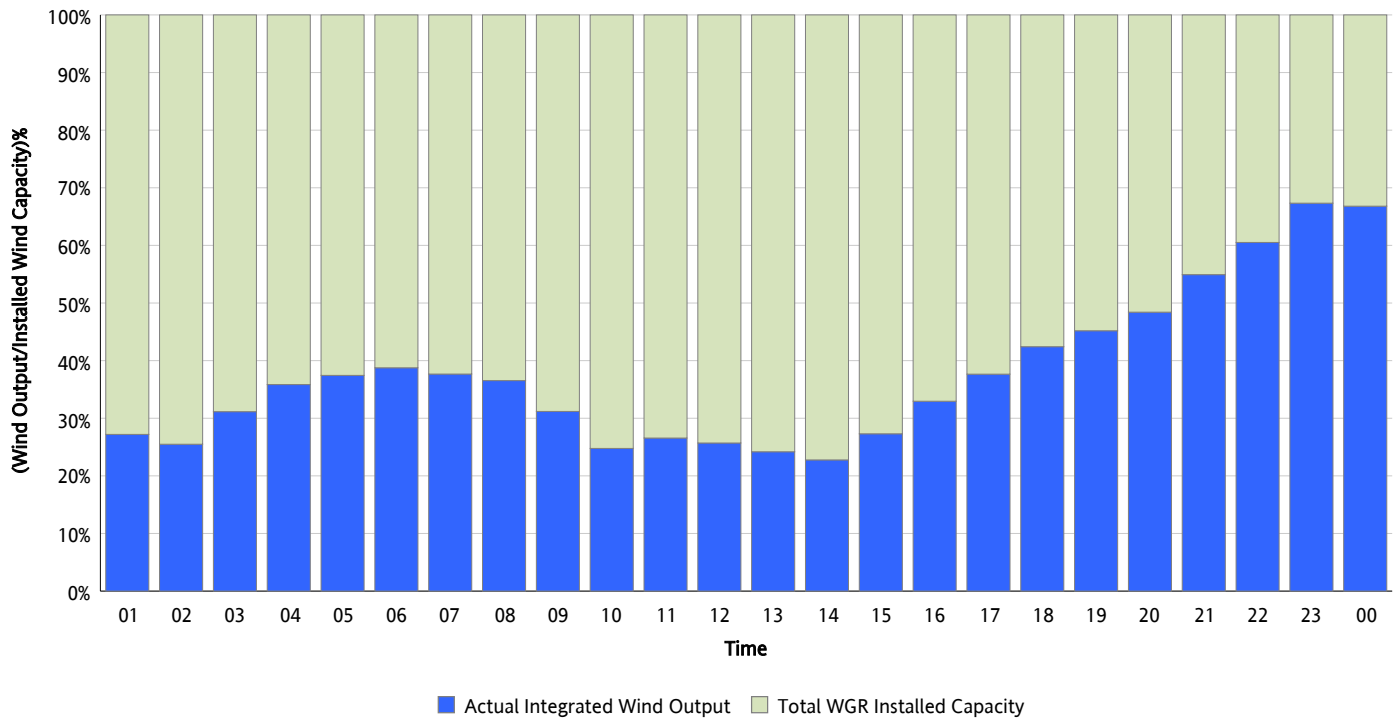
04/01/2013



* Wind Record and Wind Max represent instantaneous values and the rest of the values are integrated over the hour

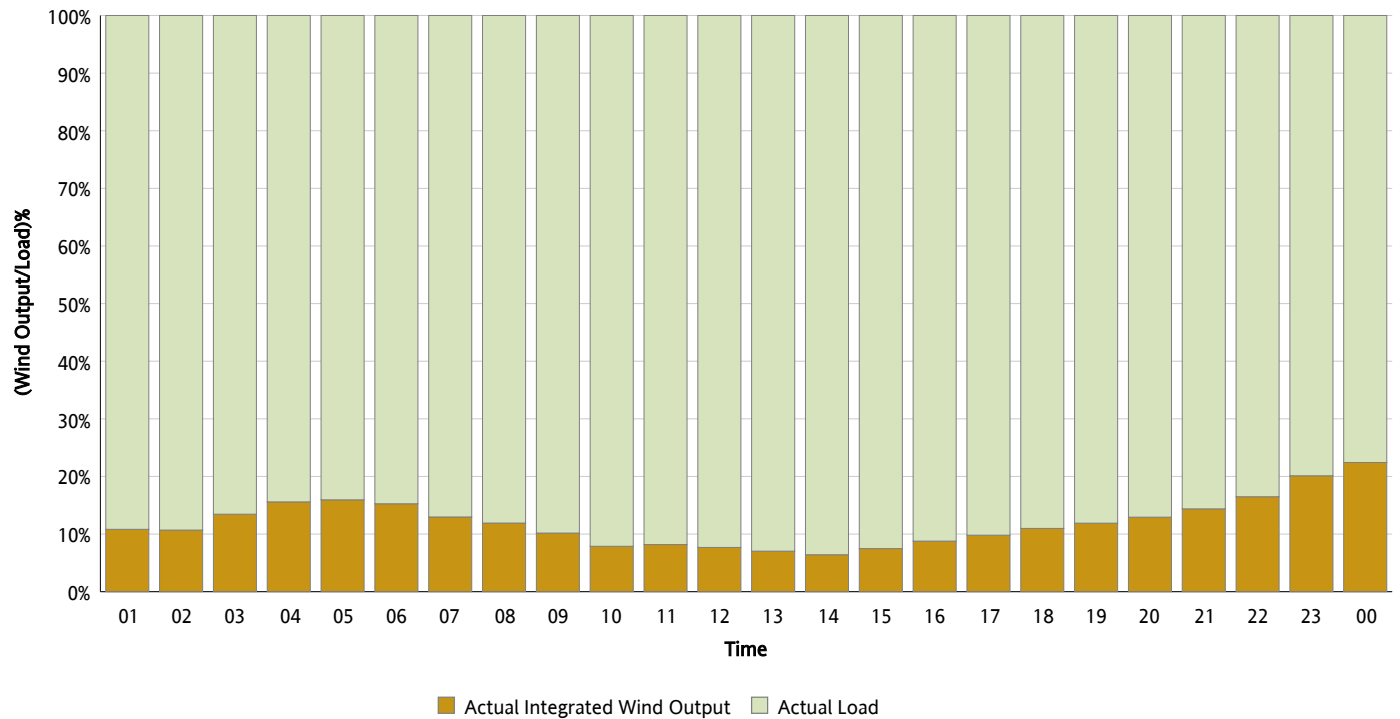
Actual Wind Output as a Percentage of the Total Installed Wind Capacity

04/01/2013



Actual Wind Output as a Percentage of the ERCOT Load

04/01/2013



ERCOT Load vs. Actual Wind Output

03/25/2013 - 04/01/2013

